

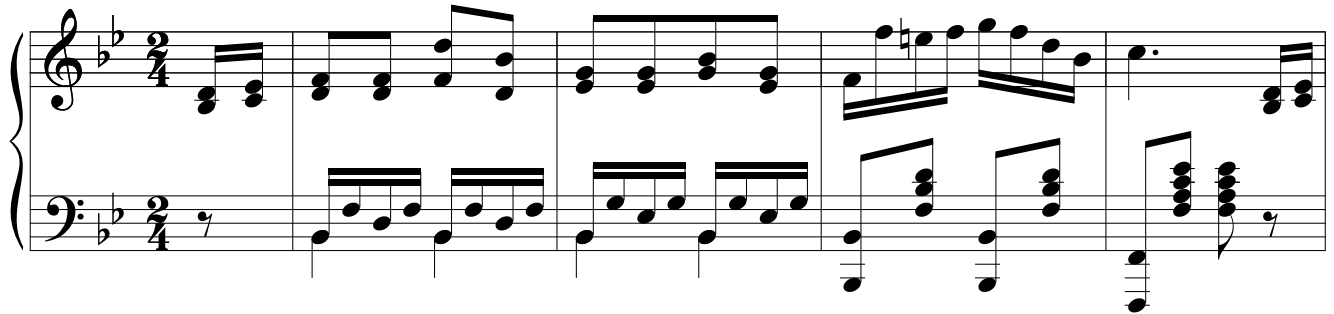
# Mother, Can I Go?

Words by  
Unknown

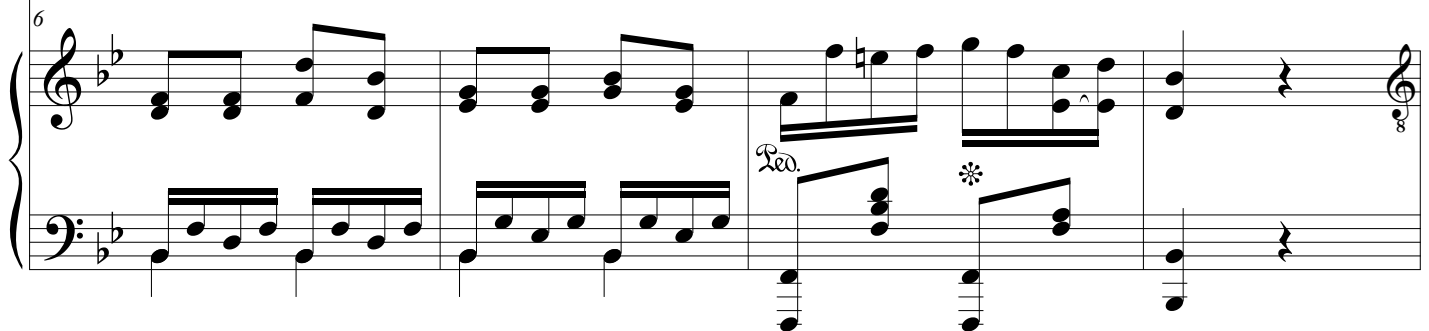
Ballad

Music by  
Joseph P. Webster

**Andante non Troppo**



1. I am
2. From the
3. I am
4. He who
5. There will
6. I have



10

writ - ing to you, moth - er, know - ing well what you will say, When you  
bat - tered walls of Sum - ter, from the wild waves of the sea, I have  
young and slen - der, moth - er, they would call me yet a boy, But I  
led his cho - sen peo - ple, in their ef - fort to be free From the  
come a day of glad - ness, when the peo - ple of the Lord Shall look  
writ - ten to you moth - er, with a con - scious - ness of right; I am

10

B $\flat$  E $\flat$  B $\flat$  F7

14

read with tear - ful fond - ness what I write to you to - day; Know - ing  
heard her cry for suc - cor, as the voice of God to me; In pros -  
know the land I live in, and the bless - ings I en - joy; I am  
tyr - an - ny of E - gypt, will be mer - ci - ful to me; Will pro -  
proud - ly on their ban - ner, which His mer - cy has re - stored; When the  
think - ing of you fond - ly, with a loy - al heart to - night; When I

14

B $\flat$  E $\flat$  B $\flat$ /F F7 B $\flat$

18

well the flame of ar - dor on a loy - al moth - er's part, That will  
 per - i - ty I loved her, in her days of dark dis - tress, With your  
 old e - nough, my moth - er, to be loy - al, proud and true To the  
 tect me by His pow - er, what - so - e'er I un - der - take; Will re -  
 stars in per - fect num - ber, on their az - ure field of blue, Shall be  
 have your no - ble bid - ding, which shall tell me to press on, I will

18

8

Bb/F F7 Bb F Bb

22

kin - dle with each im - pulse, with each throb - bing of your heart. I have  
 spir - it in me, moth - er, could I love that coun - try less? They have  
 faith - ful sense of du - ty I have ev - er learned from you. We must  
 turn me home in safe - ty dear - est moth - er, for your sake. Or should  
 clus - tered in a Un - ion, then and ev - er firm and true. I may  
 come and kiss you, moth - er, come and kiss you and be gone. In the

22

8

Cm/G Bb Bb Bb/F Cm

26

heard my coun - try's call - ing, for her sons that still are true, I have  
 pierced her heart with trea - son; they have caused her sons to bleed; They have  
 con - quer this re - bel - lion; let the doubt - ing heart be still; We must  
 this my bleed - ing coun - try need a vic - tim such as me, I am  
 live to see it, moth - er, when the pa - triot's work is done, And your  
 sa - cred name of Free - dom, and my coun - try as her due In the

Chord progression for measures 26-29: Eb, Bb, Bb Eb, F.

30

loved that coun - try, moth - er, on - ly next to God and you; And my  
 robbed her in her kind - ness; they have tri - umphed in her need; They have  
 con - quer it or per - ish; we must con - quer, and we will! But the  
 noth - ing more than oth - ers who have per - ished to be free, On her  
 heart, so full of kind - ness, will beat proud - ly for your son; Or through  
 name of Law and Jus - tice, I have writ - ten this to you. I am

Chord progression for measures 30-33: F, F, C7, F.

34

soul is spring - ing for - ward to re - sist her bit - ter foe; Can I  
 tram - pled on her stand - ard, and she calls me in her woe; Can I  
 faith - ful must not fal - ter, and shall I be want - ing? No! Bid me  
 bos - om, let me slum - ber, on her al - tar let me lie; I am  
 tears your eyes may see it with a sad - ly thought - ful view, And may  
 ea - ger, anx - ious, long - ing to re - sist my coun - try's foe; Shall I

Chord progression for measures 34-37:  
 Measure 34: Bb  
 Measure 35: Eb  
 Measure 36: Bb F Bb  
 Measure 37: F7 Bb F7

38

go, my dear - est moth - er, tell me, moth - er, can I go?  
 go, my dear - est moth - er, tell me, moth - er, can I go?  
 go, my dear - est moth - er! tell me, moth - er, can I go?  
 not a - fraid, my moth - er, in so good a cause to die.  
 love it still more dear - ly for the cost it won from you.  
 go, my dear - est moth - er? tell me, moth - er, shall I go?

Chord progression for measures 38-41:  
 Measure 38: Bb F Bb  
 Measure 39: Eb  
 Measure 40: Bb/F  
 Measure 41: F7 Bb