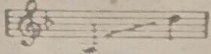
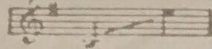


Nº 1. D. Minor.

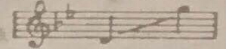


Nº 2. E. Minor. (Original)

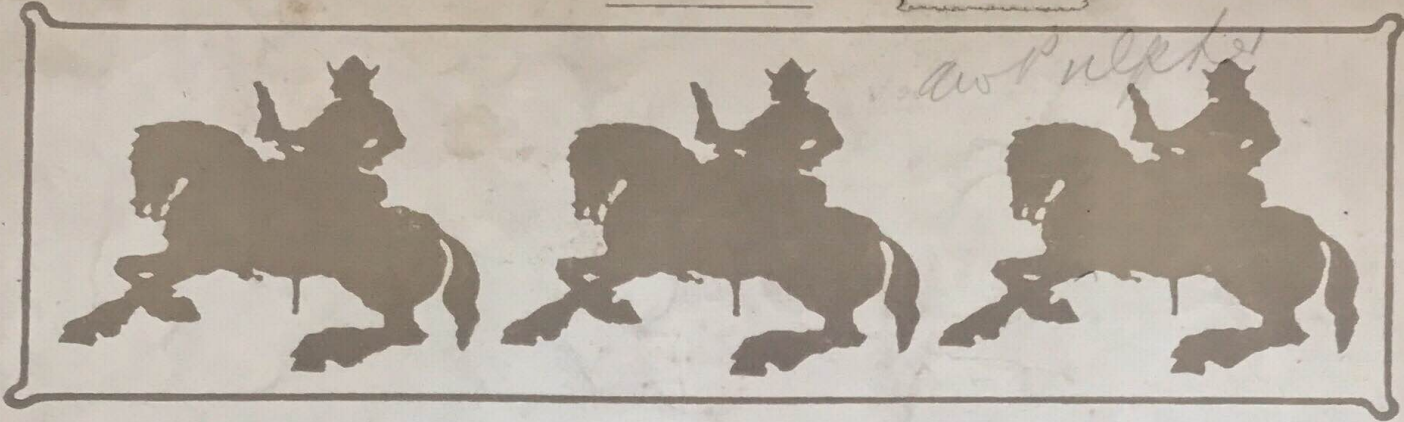


69

Nº 3. G. Minor.



9



*as pulled*

Freebooter Songs  
No 3.

*Ward*

# Son of Mine

cradle song

the words & music by

# William Wallace.

*William Wallace*

Price 2sh.net.

London: J. B. Cramer & Co. Ltd.

139, New Bond Street, W.

NEW YORK: CHAPPELL & CO. LTD. 41, EAST 34TH STREET.

Sole Agent for Holland and Dutch Colonies

JACO ELTE THE HAGUE.

Printed in England.

Orchestral Score &  
band parts on hire  
copyright. MCM1.  
by J. B. CRAMER & CO. LTD.  
for all Countries.

FREEBOOTER SONGS.  
Nº 3. CRADLE SONG.

(SON OF MINE.)

Words and Music by

WILLIAM WALLACE.

Larghetto.  $\text{♩} = 72.$

PIANO.

*pp*

The first system of the piano introduction consists of two staves. The right hand starts with a treble clef, a key signature of one sharp (F#), and a 4/4 time signature. It begins with a quarter note G4, followed by a half note A4-B4, and then a quarter note C5. The left hand starts with a bass clef and a 4/4 time signature, playing a quarter note G2, followed by a half note A2-B2, and then a quarter note C3. The system concludes with a measure containing two triplet eighth notes in both hands: G4-A4-B4 in the right hand and G2-A2-B2 in the left hand.

*fz*

The second system of the piano introduction continues with two staves. The right hand has a treble clef, one sharp, and 4/4 time. It features a half note G4, followed by a half note A4-B4, and then a quarter note C5. The left hand has a bass clef, one sharp, and 4/4 time, playing a half note G2, followed by a half note A2-B2, and then a quarter note C3. The system ends with a measure of two triplet eighth notes: G4-A4-B4 in the right hand and G2-A2-B2 in the left hand.

Dream thy ba-by dream, Son of mine! To the

*p*

The first system of the vocal and piano accompaniment features a vocal line on a treble clef staff and a piano accompaniment on a grand staff. The vocal line has a key signature of one sharp and 4/4 time. It begins with a quarter note G4, followed by a half note A4-B4, and then a quarter note C5. The piano accompaniment has a bass clef, one sharp, and 4/4 time, playing a half note G2, followed by a half note A2-B2, and then a quarter note C3. The system concludes with a measure of two triplet eighth notes in both the vocal and piano parts: G4-A4-B4 and G2-A2-B2.

mur - mur of the stream, Son of mine! In thy

The second system of the vocal and piano accompaniment continues with a vocal line on a treble clef staff and a piano accompaniment on a grand staff. The vocal line has a key signature of one sharp and 4/4 time. It begins with a quarter note G4, followed by a half note A4-B4, and then a quarter note C5. The piano accompaniment has a bass clef, one sharp, and 4/4 time, playing a half note G2, followed by a half note A2-B2, and then a quarter note C3. The system concludes with a measure of two triplet eighth notes in both the vocal and piano parts: G4-A4-B4 and G2-A2-B2.

heath-er crad - le rock - ing, With thy fin - gers round mine locking, While the

sheep are homeward flocking, Son of mine!

In thy lit - tle breast, Son of mine, Love and

peace a - lone have rest, Son of mine, In the

pur-ple of the heath-er, In the calm and storm-y weather, Thou and

I, a-lone to-geth-er, Son of mine.

*con moto.*  
Thou shalt be a man, son of mine: Thou shalt lead the broken clan, Son of

mine. With thy musket on thy shoulder Thou shalt prove who is the bolder, Ere the

*rit.*

mountains are much old-er, Son of mine.

*rit.* *tempo primo.*

*p* *pp*

Fath-er's hunt-ed down, Son of mine, But his heart's thy ver-y own, Son of

*p* *pp*

mine. There are laws he's sworn to al-ter, He— will

*mf*

nev-er yield nor fal-ter, And we'll yet de-fy the hal-ter, Son of mine!

*f* *colla voce.* *fz* *ff*