

Becken, Triangel,
Große Trommel

FINLANDIA

Sinfonische Dichtung, bearbeitet für Blechbläser

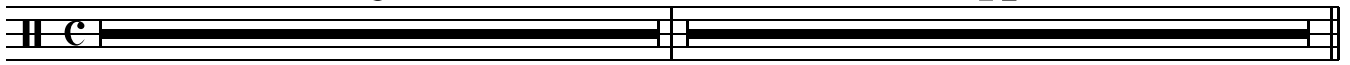
Jean Sibelius

Arr.: Jonas Vincent Spanier

Andante sostenuto $\text{♩} = 57$
9

A

14



24 B

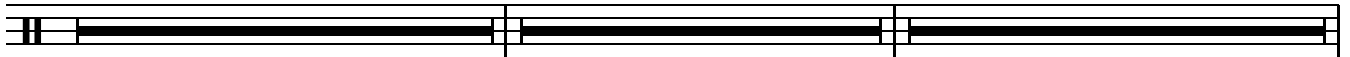
14

C

8

D

14



Allegro moderato $\text{♩} = 136$

60 E

13

F

15



Allegro $\text{♩} = 140$

89 G

5

H

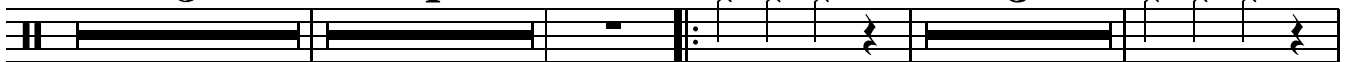
4

I

Becken

3

Becken



ff

ff

104

2

J

Triangel

5



116 K

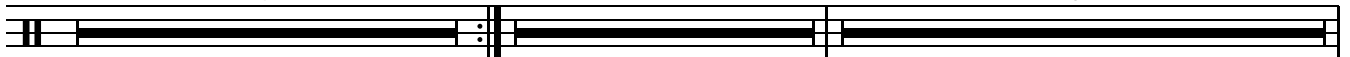
9

L

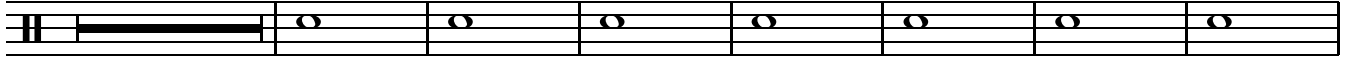
4

M

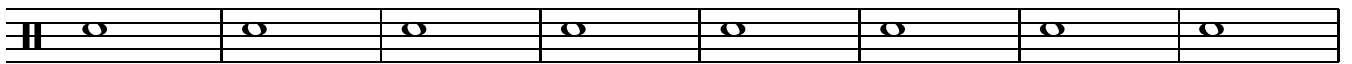
25





Becken, Triangel, , Große Trommel

154 **N** **2** Große Trommel
tr tr tr tr tr tr tr tr

ppp

163 *tr tr tr tr tr tr tr tr*


171 **O** *tr tr tr tr tr tr tr tr*


179 **P** **5** Becken **5** **Q** Becken
ff f cresc. molto


193 **R** **2**
fff ff ff


200 **S** **6** *rall.*


209 **T** *a tempo* **6**
