

Overture zur Oper
Der fliegende Holländer

Bariton

für sinfonisches Blasorchester

Richard Wagner

Arr.: Jonas Vincent Spanier

Allegro con brio $\text{♩} = 85$

8 *mp*

12 **A** *ff*

17 *ff* 2

21 **B** *ff*

24 **C** 7 *fff*

34

38 *dimin.*

42 **D** 20 *p*

65 **E** **Andante** $\text{♩} = 44$ 22

87

8



97 **F**

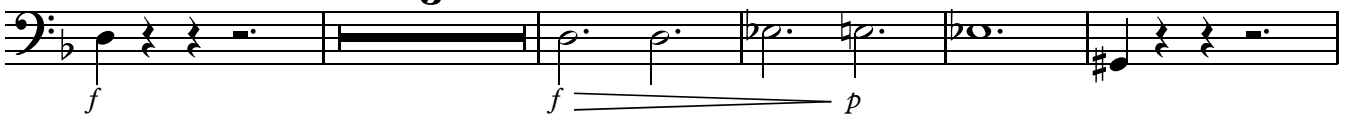
4



105

3

G

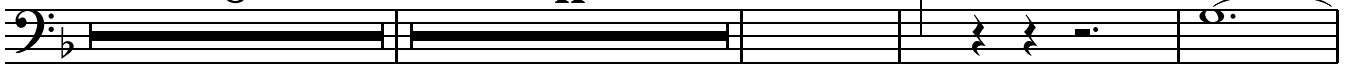


113

8

H

11



135



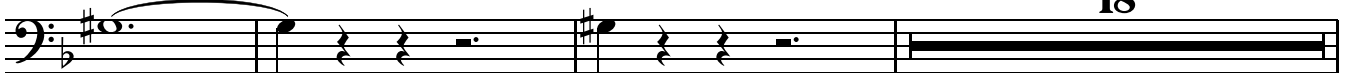
141



146

I

18

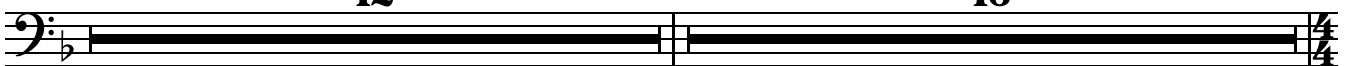


167 **J**

12

K

16



195 **L** $\text{♩} = 100$

3



203 **M**

14

N



223

O Allegro con brio $\text{♩} = 85$

5

f

Detailed description: This block contains the first system of music, measures 223 to 228. It begins with a bass clef and a key signature of one flat. Measure 223 starts with a quarter rest, followed by a quarter note G2. Measure 224 contains a whole rest. Measure 225 is a whole note G2. Measure 226 is a whole note A2. Measure 227 is a whole note B2. Measure 228 is a whole note C3. A dynamic marking of *f* is placed below measure 226. A bracket above measures 225-228 is labeled with the number 5.

231

Detailed description: This block contains measures 231 to 234. Measure 231: quarter notes G2, A2, B2. Measure 232: quarter notes C3, D3, E3. Measure 233: quarter notes F3, G3, A3. Measure 234: quarter notes B3, C4, D4.

P

235

ff

Detailed description: This block contains measures 235 to 242. Measure 235: quarter notes G2, A2, B2. Measure 236: quarter notes C3, D3, E3. Measure 237: quarter notes F3, G3, A3. Measure 238: quarter notes B3, C4, D4. Measure 239: quarter notes E4, F4, G4. Measure 240: quarter notes A4, B4, C5. Measure 241: quarter notes D5, E5, F5. Measure 242: quarter notes G5, A5, B5. A dynamic marking of *ff* is placed below measure 235. A slur covers measures 239-242.

239

ff

Detailed description: This block contains measures 239 to 242. Measure 239: quarter notes E4, F4, G4. Measure 240: quarter notes A4, B4, C5. Measure 241: quarter notes D5, E5, F5. Measure 242: quarter notes G5, A5, B5. A dynamic marking of *ff* is placed below measure 239. A slur covers measures 239-242.

243 **Q**

R

9

mf

Detailed description: This block contains measures 243 to 250. Measure 243: quarter notes G2, A2, B2. Measure 244: quarter notes C3, D3, E3. Measure 245: quarter notes F3, G3, A3. Measure 246: quarter notes B3, C4, D4. Measure 247: quarter notes E4, F4, G4. Measure 248: quarter notes A4, B4, C5. Measure 249: quarter notes D5, E5, F5. Measure 250: quarter notes G5, A5, B5. A dynamic marking of *mf* is placed below measure 250. A bracket above measures 243-250 is labeled with the number 9.

256

S

10

pp

Detailed description: This block contains measures 256 to 263. Measure 256: quarter notes G2, A2, B2. Measure 257: quarter notes C3, D3, E3. Measure 258: quarter notes F3, G3, A3. Measure 259: quarter notes B3, C4, D4. Measure 260: quarter notes E4, F4, G4. Measure 261: quarter notes A4, B4, C5. Measure 262: quarter notes D5, E5, F5. Measure 263: quarter notes G5, A5, B5. A dynamic marking of *pp* is placed below measure 260. A bracket above measures 256-263 is labeled with the number 10.

269

f *p*

Detailed description: This block contains measures 269 to 276. Measure 269: quarter notes G2, A2, B2. Measure 270: quarter notes C3, D3, E3. Measure 271: quarter notes F3, G3, A3. Measure 272: quarter notes B3, C4, D4. Measure 273: quarter notes E4, F4, G4. Measure 274: quarter notes A4, B4, C5. Measure 275: quarter notes D5, E5, F5. Measure 276: quarter notes G5, A5, B5. Dynamic markings of *f* and *p* are placed below measures 269 and 274 respectively.

273

f *p*

Detailed description: This block contains measures 273 to 280. Measure 273: quarter notes E4, F4, G4. Measure 274: quarter notes A4, B4, C5. Measure 275: quarter notes D5, E5, F5. Measure 276: quarter notes G5, A5, B5. Measure 277: quarter notes C6, D6, E6. Measure 278: quarter notes F6, G6, A6. Measure 279: quarter notes B6, C7, D7. Measure 280: quarter notes E7, F7, G7. Dynamic markings of *f* and *p* are placed below measures 273 and 277 respectively.

277

mf

Detailed description: This block contains measures 277 to 282. Measure 277: quarter notes C6, D6, E6. Measure 278: quarter notes F6, G6, A6. Measure 279: quarter notes B6, C7, D7. Measure 280: quarter notes E7, F7, G7. Measure 281: quarter notes A7, B7, C8. Measure 282: quarter notes D8, E8, F8. A dynamic marking of *mf* is placed below measure 277. A slur covers measures 277-282.

283

T Ritenuto

ff

Detailed description: This block contains measures 283 to 288. Measure 283: quarter notes C6, D6, E6. Measure 284: quarter notes F6, G6, A6. Measure 285: quarter notes B6, C7, D7. Measure 286: quarter notes E7, F7, G7. Measure 287: quarter notes A7, B7, C8. Measure 288: quarter notes D8, E8, F8. A dynamic marking of *ff* is placed below measure 283. A double line is drawn below the staff.

Bariton

288 a tempo

8

Ritenu**to**

3

a tempo

301

Ritenu**to**

U

f

306 a tempo

310 Ritenu**to**

2

a tempo

p

315

V

5

f

322

W ♩ = 200

6

2

ff

ff

334

13

pp

352

X

2

f

p

f

p

360

f

p

366

f

372

ff

377

Y

12

Z

Ritenu

7

p *ff*