

SUITE in D MINOR

(from: 'Jube Domine' - 1685)
for 2 Flugelhorns and Bass Trombone

Score (02':10")

Antonio Nola (1642 - after 1701)

Arr. Michel Rondeau

1. Moderato ♩ = 80

Flugelhorn 1

Flugelhorn 2

Bass Trombone

2. Moderato

5

Flghn. 1

Flghn. 2

B. Tbn.

9

Flghn. 1

Flghn. 2

B. Tbn.

3. Allegro

14

Flghn. 1

Flghn. 2

B. Tbn.

18

Flghn. 1

Flghn. 2

B. Tbn.

22

Flghn. 1

Flghn. 2

B. Tbn.

27

Flghn. 1

Flghn. 2

B. Tbn.

3

31

Flghn. 1

Flghn. 2

B. Tbn.

tr

35

Flghn. 1

Flghn. 2

B. Tbn.

40

Flghn. 1

Flghn. 2

B. Tbn.

SUITE in D MINOR

(from: 'Jube Domine' - 1685)
for 2 Flugelhorns and Bass Trombone

B \flat Flugelhorn 1

Antonio Nola (1642 - after 1701)
Arr. Michel Rondeau

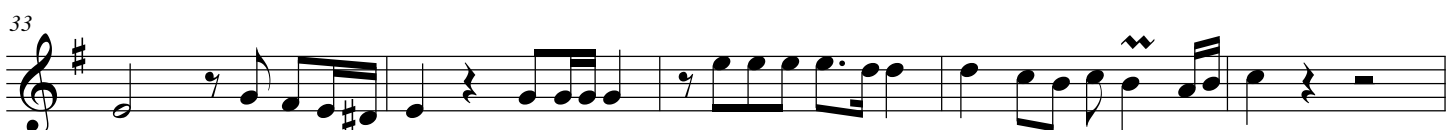
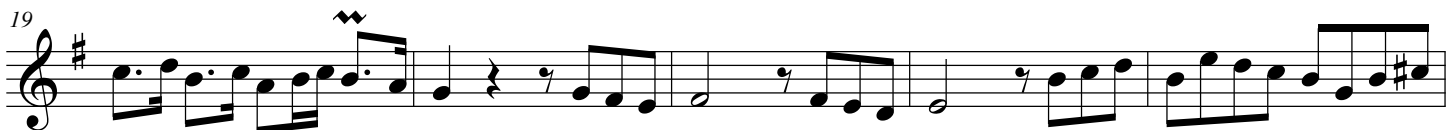
1. Moderato $\text{♩} = 80$



2. Moderato



3. Allegro



SUITE in D MINOR

(from: 'Jube Domine' - 1685)
for 2 Flugelhorns and Bass Trombone

B \flat Flugelhorn 2

Antonio Nola (1642 - after 1701)
Arr. Michel Rondeau

1. Moderato $\text{♩} = 80$



2. Moderato



3. Allegro



SUITE in D MINOR

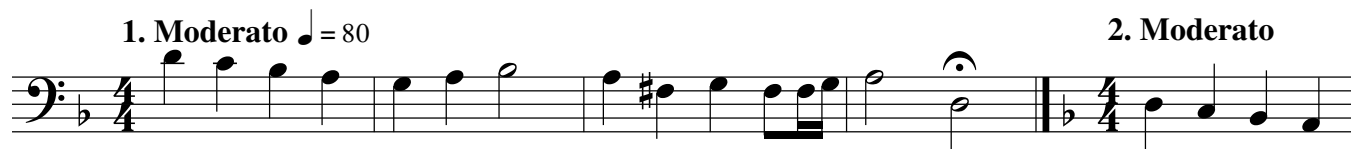
(from: 'Jube Domine' - 1685)
for 2 Flugelhorns and Bass Trombone

Bass Trombone

Antonio Nola (1642 - after 1701)
Arr. Michel Rondeau

1. Moderato ♩ = 80

2. Moderato



6



3. Allegro

12



18



24



30



37

