

“The Flying Dutchman Overture”
(abridged)

Richard Wagner

Scored for 12 trombones

arranged by

Bob Reifsnyder

Music from the

REVOLUTIONARY BONE COLLECTION

VOLUME TWO

About the Composer

"Der Fleigende Hollander" of Richard Wagner (1813-83) was premiered in Dresden, Germany in 1843. It was the second of three operas to be produced there during his years as Kapellmeister of the city's Opera House (Rienzi and Tannhauser are the others). It was composed at the same time as "Nabucco" (1842) and "Don Pasquale" (1843), although Verdi was at the beginning of his career and Donizetti at the end of his. It is the earliest of his operas that is regularly performed in Bayreuth at the famous "Festspielhaus", which was built to premiere the "Ring of the Nibelung" by King Ludwig of Bavaria, Wagner's most important Patron.

Wagner's three early operas were all derivative of other composers. "Die Fleigende Hollander" is the first to be written in a totally original style, although he is still quite a ways away from the total maturity of the Ring of the Nibelung. One still finds arias and traditional operatic choruses, but he is beginning to use musical motives to represent characters and emotions throughout the opera. A popular legend about its composition, fostered by Wagner, is that he found the inspiration to compose the work after a particularly harrowing journey in the North Sea. In reality, Wagner has already conceived and written down a substantial portion of the opera before this trip, but it certainly helped with the "advertising"! It remains an incredible accomplishment for a 30-year old untrained musician and stylistically was years ahead of his counterpart Verdi, who was the same age. "Rigoletto" did not appear until 1851.

About the arranger

Bob Reifsnnyder, a graduate of Interlochen Arts Academy, has two degrees from Juilliard and a Doctorate from Indiana University. As a trombone teacher, he has served on the faculties of the Juilliard Pre-College Division, Indiana University, Indiana State University, and Ithaca College. As a professional trombonist, he has been a member of the West Point band, the National Orchestra of New York, the Spoleto Festival orchestra, Goldman Band, Ringling Brothers, the German orchestras of Bielefeld, Kaiserslautern and Solingen, Terre Haute Symphony, Tri-Cities Opera, Cayuga Chamber Orchestra, Manitowoc Symphony and the Wisconsin Philharmonic. As a gig musician, he has appeared with the Metropolitan Opera, the orchestras of Wuppertal and Dusseldorf in Germany, L'Orchestre de la Suisse Romande, Chamber Orchestra of Lausanne, Fort Wayne Philharmonic, Syracuse Symphony, Binghamton Pops, Ithaca Opera, the Wisconsin orchestras of Sheboygan, Oshkosh, Green Bay and the Fox Valley Symphony.

Notes for this arrangement

1. **Performance-** These works are designed to add to the performance repertoire of the low brass choir.
2. **Clef reading-** These arrangements will hopefully also serve as advanced clef practice for trombonists playing the top parts. It is unfortunate that clef reading skills don't seem to be a priority for many contemporary trombone teachers, but the ability to transpose at sight remains a prerequisite for becoming an excellent professional musician. Please keep in mind that the first time one has to ask a conductor for a transposed part is likely the last time one will perform with that ensemble!
3. **Scoring-** There is some octave displacement to keep the individual parts within the comfortable range of the performing instruments and to establish the alto trombone as the highest voice.
4. **Range-** The basic range of these transcriptions is from high D to low B. For each of the three quartets, the ideal mix would be alto, .525 bore tenor, .547 bore tenor and bass trombone.
5. **Breathing and Articulation-** There are no breath marks in these transcriptions; that is perhaps the most personal decision a brass player ever makes. There are, however, notes left out in extended passages that would be otherwise impossible to perform well, hopefully in the most appropriate locations. Performers are also encouraged to add slurs whenever it is deemed appropriate.

Bass Trombone 1

Overture to "The Flying Dutchman"

Wagner

Bob Reifsnyder

♩.=80



9



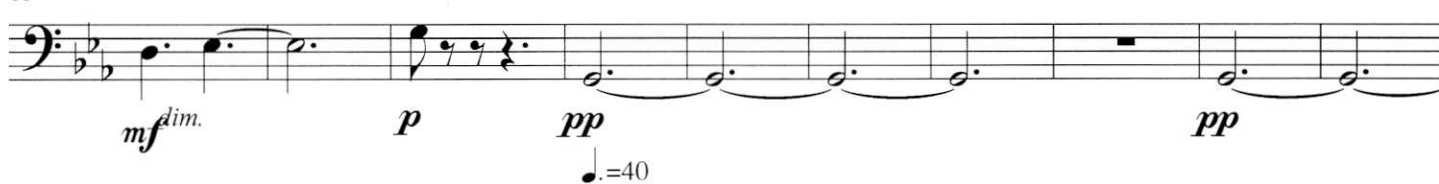
17



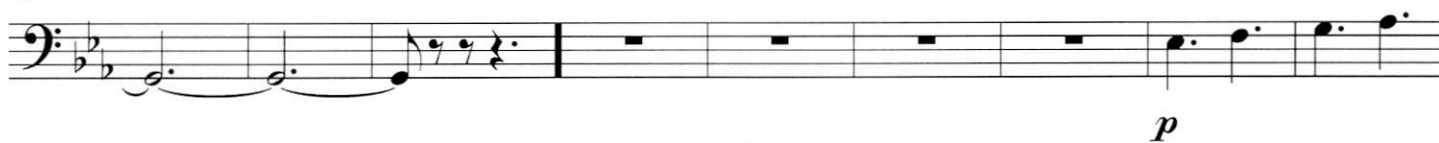
26



35



45



♩.=60

54



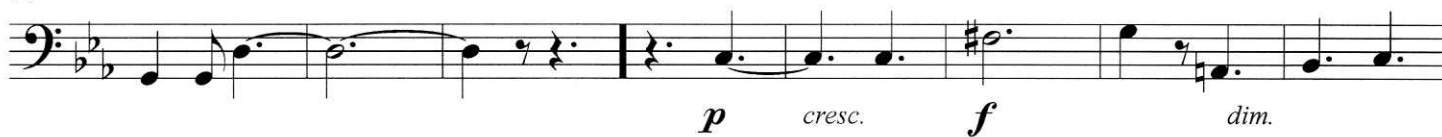
62



Overture to "The Flying Dutchman"

♩.=80

70



78



86



94



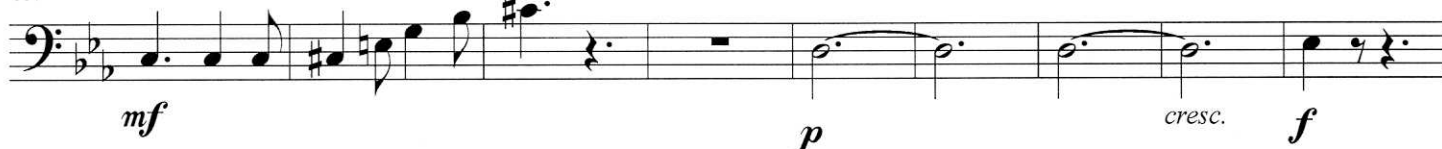
102



109



117



126



129



Overture to "The Flying Dutchman"

3

138 $\text{♩} = 80$

cresc. ***ff*** *dim.*

Detailed description: This musical staff contains measures 138 through 144. It begins with a half note G2, followed by a measure rest. The next measure has a quarter note G2, a quarter note A2, and a half note B2. This is followed by a measure with a quarter note G2, a quarter note F2, and a half note E2. The next measure has a quarter note D2, a quarter note C2, and a half note B1. The final measure has a quarter note A1, a quarter note G1, and a half note F1. The dynamics are marked *cresc.*, ***ff***, and *dim.*.

145

p ***p*** *cresc.*

Detailed description: This musical staff contains measures 145 through 152. It begins with a half note G2, followed by a measure rest. The next measure has a quarter note G2, a quarter note A2, and a half note B2. This is followed by a measure with a quarter note G2, a quarter note F2, and a half note E2. The next measure has a quarter note D2, a quarter note C2, and a half note B1. The final measure has a quarter note A1, a quarter note G1, and a half note F1. The dynamics are marked ***p***, ***p***, and *cresc.*.

153

f

Detailed description: This musical staff contains measures 153 through 157. It begins with a quarter note G2, a quarter note A2, and a half note B2. This is followed by a measure with a quarter note G2, a quarter note F2, and a half note E2. The next measure has a quarter note D2, a quarter note C2, and a half note B1. The final measure has a quarter note A1, a quarter note G1, and a half note F1. The dynamic is marked ***f***.

158 $\text{♩} = 80$

pp ***f***

Detailed description: This musical staff contains measures 158 through 164. It begins with a quarter note G2, a quarter note A2, and a half note B2. This is followed by a measure with a quarter note G2, a quarter note F2, and a half note E2. The next measure has a quarter note D2, a quarter note C2, and a half note B1. The final measure has a quarter note A1, a quarter note G1, and a half note F1. The dynamics are marked ***pp*** and ***f***.

165

cresc. ***ff***

Detailed description: This musical staff contains measures 165 through 172. It begins with a quarter note G2, a quarter note A2, and a half note B2. This is followed by a measure with a quarter note G2, a quarter note F2, and a half note E2. The next measure has a quarter note D2, a quarter note C2, and a half note B1. The final measure has a quarter note A1, a quarter note G1, and a half note F1. The dynamics are marked *cresc.* and ***ff***.

173

f

Detailed description: This musical staff contains measures 173 through 180. It begins with a quarter note G2, a quarter note A2, and a half note B2. This is followed by a measure with a quarter note G2, a quarter note F2, and a half note E2. The next measure has a quarter note D2, a quarter note C2, and a half note B1. The final measure has a quarter note A1, a quarter note G1, and a half note F1. The dynamic is marked ***f***.

181

f ***f*** ***mf***

Detailed description: This musical staff contains measures 181 through 187. It begins with a quarter note G2, a quarter note A2, and a half note B2. This is followed by a measure with a quarter note G2, a quarter note F2, and a half note E2. The next measure has a quarter note D2, a quarter note C2, and a half note B1. The final measure has a quarter note A1, a quarter note G1, and a half note F1. The dynamics are marked ***f***, ***f***, and ***mf***.

188

cresc. ***f***

Detailed description: This musical staff contains measures 188 through 195. It begins with a quarter note G2, a quarter note A2, and a half note B2. This is followed by a measure with a quarter note G2, a quarter note F2, and a half note E2. The next measure has a quarter note D2, a quarter note C2, and a half note B1. The final measure has a quarter note A1, a quarter note G1, and a half note F1. The dynamics are marked *cresc.* and ***f***.

196 $\text{♩} = 80$ $\text{♩} = 80$ $\text{♩} = 80$ $\text{♩} = 80$

cresc. ***mf*** *cresc.*

Detailed description: This musical staff contains measures 196 through 203. It begins with a quarter note G2, a quarter note A2, and a half note B2. This is followed by a measure with a quarter note G2, a quarter note F2, and a half note E2. The next measure has a quarter note D2, a quarter note C2, and a half note B1. The final measure has a quarter note A1, a quarter note G1, and a half note F1. The dynamics are marked *cresc.*, ***mf***, and *cresc.*.

202 $\text{♩}=80$ $\text{♩}=80$

p *mf* *cresc.* *f*

210 $\text{♩}=40$ $\text{♩}=80$

cresc. *ff* *pp* *cresc.*

217 $\text{♩}=40$

f *f* *dim.* *p*

224 $\text{♩}=80$ $\text{♩}=40$

cresc. *f*

230 $\text{♩}=80$

p *cresc.* *f*

235 $\text{♩}=80$

p *cresc.*

238 $\text{♩}=80$

f *cresc.*

241 $\text{♩}=80$

ff *f* *mf*

248

f *cresc.* *ff* *mp*

255



263



269



276



283



291



299

